



THE UNIVERSITY OF  
**WESTERN  
AUSTRALIA**

Academic Appointment

# Professor of Mineral Geoscience and Director of the Centre for Exploration Targeting (CET)

Information for Candidates





Thank you for your interest in the Academic Appointment of a Professor of Mineral Geoscience and Director of the Centre for Exploration Targeting (CET) at The University of Western Australia (UWA).

# Welcome

**Thank you for your interest in the appointment of Professor of Mineral Geoscience and Director of the Centre for Exploration Targeting (CET) at The University of Western Australia (UWA).**

We offer you an exciting opportunity to work with an institution that has developed a strong reputation for excellence in teaching, research, community engagement and aspires to be ranked in the top 50 world universities by 2050.

At UWA we want you to pursue what others deem to be impossible, challenge convention and be inspired by all of the possibilities. We offer you an environment in which you can make a difference to the world and encourage others to do so too. You are not only joining a World Top 100 university, you will be part of a community of people committed to the world's advancement.

As the only Western Australian university in the Group of Eight, a coalition of leading Australian universities, you will have access to an exceptional support network committed to creating change.

We look forward to hearing from candidates with the ingenuity and vision to build a best in class brand, marketing and recruitment strategy that will inspire students and academics around the world to join our community.



**Professor Dawn Freshwater**  
**Vice-Chancellor**



# The University of Western Australia

**When you join the UWA community, you will find dynamic and forward-thinking colleagues who, like you, are determined to challenge convention and make new things happen.**

We operate more than 130 research and training centres and receive roughly 80 per cent of all research funding to Western Australian universities annually.

Accepting a role at UWA allows you to use your research and academic curiosity to help set you, and this university, apart from others.

We celebrate strong industry partnerships and are placed equal first in Australia on key measures, including research intensity and research grants, according to the Good Universities Guide 2016. QS World Rankings has given us its highest rating of 5 Stars+ and we rank in the top one per cent of universities worldwide.

At UWA, we help people make the most of the possibilities presented. The University is a community of people with a desire to make the most of their potential and contribute to the world's advancement. Join us and pursue your ambitions.

[uwa.edu.au](http://uwa.edu.au)





## Mission

To provide world class education, research and community engagement for the advancement of prosperity and welfare of our communities.



## Vision

To become recognised as one of the world's top 50 global universities by 2050.

# University governance and management

The University is governed by the Senate, comprising 21 members from a range of backgrounds: community, staff, students and graduates.

Chaired by the Chancellor, Dr Michael Chaney AO CitWA, the key roles of the Senate are:

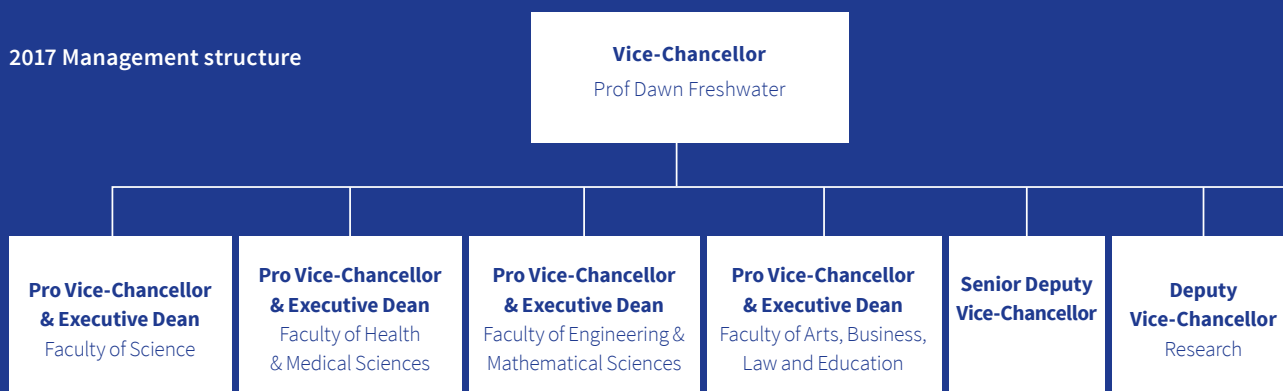
- broad overview of strategic directions in the University;
- overseeing corporate governance;
- overseeing management of financial, human and physical resources;
- performance monitoring;
- legislative responsibility; and
- support, guidance and performance monitoring of the Vice-Chancellor.

## Key stats

Student enrolments 2016	24,470
Total staff (FTE) 2016	3,559
Research publications 2015	4,974



## 2017 Management structure



# Key institutional networks

## Group of Eight

The Group of Eight is a coalition of leading Australian universities, intensive in research and comprehensive in general and professional education.

[go8.edu.au](http://go8.edu.au)

## Matariki Network of Universities

This international group of seven universities across seven nations focuses on strong links between research and undergraduate teaching, promoting international best practice in research and education.

[matarikinetwork.com](http://matarikinetwork.com)

## Worldwide Universities Network

The major issues facing our planet are of a magnitude that no single institution or organisation can address on its own. WUN collaborations aim to involve a number of world- leading academic partners in addressing the following 'Global Challenges'.

[wun.ac.uk](http://wun.ac.uk)



# The Opportunity

You will have the opportunity to work in a dynamic research environment in the School of Earth Sciences and its Centre for Exploration Targeting (CET) which is recognised as a world leader in mineral geoscience. As part of this role, you will be expected to strengthen existing relationships and establish new relationships with external stakeholders, including the minerals industry, state and federal governmental agencies and other universities and research institutions. Expertise in mineral geoscience will enable you to contribute to the School's undergraduate and postgraduate teaching programs and research supervision.

Earth and Marine Science at UWA is ranked 3rd in Australia and 30th internationally in the QS World University Rankings. This role will give you the opportunity to work in a research-intensive Faculty of Science that values excellence in teaching, research and collegiality.





# The School of Earth Sciences

**The School of Earth Sciences is proud to have been built on a foundation of 100 years of geology at UWA!**

We have 50 academic staff in the School composed of teaching-research and research staff. Our high international research rankings reflect our focus on high quality research and impact, and strong capacity to attract competitive and applied research funding.

The school is responsible for delivering Geology undergraduate and Honours majors, and contributing to the Marine Science major, and has a long history of Masters coursework teaching. Masters degrees are offered in Geoscience, Ore Deposit Geology, Hydrogeology and Petroleum Geoscience, and we are working towards a Marine Geoscience masters.

[www.science.uwa.edu.au/schools/earth-sciences](http://www.science.uwa.edu.au/schools/earth-sciences)

## Centre for Exploration Targeting

Our reputation for world-class mineral geoscience has been established over several decades. The current centre, the Centre for Exploration Targeting (CET), has been operating for 12 years. The broad activities of the CET are focused on research that aims to deliver innovative outputs to improve the rate and quality of mineral exploration discoveries.

The CET has an impressive portfolio of research projects and well established collaborations with state and federal government agencies, minerals industry partners, and leading universities in Australia and overseas. Key activities undertaken by research staff and students include 4D evolution of mineralised terranes, mineral systems in a wide range of tectonic settings and host rocks, geophysics and computational analysis, and risk and value analysis in exploration and mining.

[www.cet.uwa.edu.au](http://www.cet.uwa.edu.au)



# Western Australia and Perth

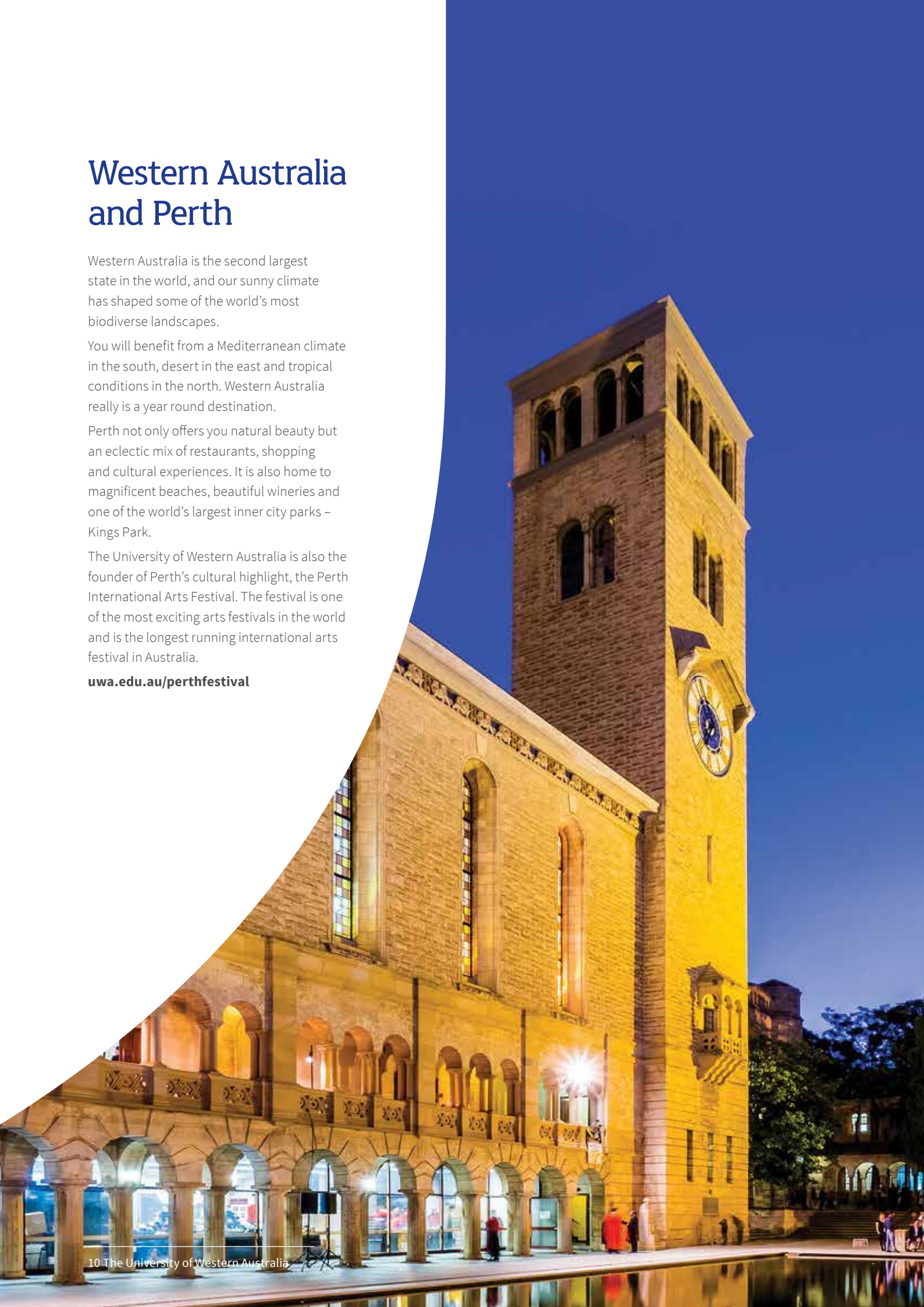
Western Australia is the second largest state in the world, and our sunny climate has shaped some of the world's most biodiverse landscapes.

You will benefit from a Mediterranean climate in the south, desert in the east and tropical conditions in the north. Western Australia really is a year round destination.

Perth not only offers you natural beauty but an eclectic mix of restaurants, shopping and cultural experiences. It is also home to magnificent beaches, beautiful wineries and one of the world's largest inner city parks – Kings Park.

The University of Western Australia is also the founder of Perth's cultural highlight, the Perth International Arts Festival. The festival is one of the most exciting arts festivals in the world and is the longest running international arts festival in Australia.

**[uwa.edu.au/perthfestival](http://uwa.edu.au/perthfestival)**



# Role, key responsibilities and selection criteria

## Role

This is an exciting opportunity to provide leadership in Mineral Geoscience research and teaching in the School of Earth Sciences and as Director of the next phase of the Centre for Exploration Targeting. The Director will be primarily responsible for the Centre's external profile with the national and global minerals industry, and governmental geoscience organisations, and will be expected to develop new areas of research activity and graduate training.

## Challenges

There is tremendous support for mineral geoscience in the Faculty of Science, UWA and among external industry stakeholders. The appointee has the opportunity to build on this strong base and to do so within a school that has strong strategic focus across all its activities. Nonetheless, there are specific challenges including the current global economic climate and its impact on generation of research projects, and attracting industry - or government-based graduates to undertake Masters coursework units and/or degrees.





## Conditions of employment

- Tenurable subject to satisfactory performance.
- Employer contribution to superannuation of 17% (with employee contribution of 7%)
- Annual recreation leave of 20 working days.
- Opportunity to undertake consulting.
- Information on additional aspects such as relocation and employee benefits available on request.

## Key responsibilities

### Research & Engagement

- Provide leadership in the core activities of research, research training and teaching in the area of mineral geoscience and foster sub-disciplinary interactions within the School of Earth Sciences and with key collaborators.
- Strengthen external engagement in mineral geoscience at UWA with national and international industry and government partners, and foster relationships with our alumni.
- Play a key role in the design, implementation and fund appropriation for strategic geoscience initiatives related to exploration targeting.
- Generate research projects consistent with the vision, mission and diverse themes of the Centre for Exploration Targeting.
- Work within the School to ensure the sustained viability of the Centre and the School.
- Develop and facilitate applications for competitive research funding.

### Teaching & Learning

- Provide high quality supervision of Honours, Masters and PhD students
- Undertake innovative postgraduate coursework teaching to contribute to the delivery of an outstanding student experience at UWA.

### Service

- Participate in School and Faculty meetings, contribute to School policy development and curriculum planning.
- Promote UWA through involvement in professional associations, conferences, and other external activities.
- Foster an environment of innovation, collegiality and participation at all levels within the University.



## Selection criteria

- Hold a PhD in Geoscience with >10 years of postdoctoral and/or industry experience in mineral geoscience.
- Recognition as a geoscience leader and manager with a demonstrated record of achievement in mineral exploration including successful work experience at the interface between applied research and fundamental science.
- Demonstrated experience in developing, applying and translating integrated empirical and conceptual models for ore genesis into effective exploration targeting criteria.
- The ability to provide effective and inclusive scientific leadership through the supervision and development of individuals and groups in applied research and/or mineral exploration.
- Demonstrate an ability to liaise and communicate effectively with members of the community, professional and industry bodies, advisory groups, and especially with members of the international exploration industry.
- Demonstrated capacity for integrated research activity both within and across groups in academic and/or industry settings, and an ability to build partnerships within the University and externally with a range of stakeholders.
- Commitment to the effective transfer of the Centre for Exploration Targeting's outputs to the exploration industry and other stakeholders through appropriate learning methods and technologies.
- Demonstrate a strong personal commitment to high quality teaching at postgraduate level including fieldwork teaching.
- Capacity to be proactive in the maintenance of academic standards and in the development of educational policy and curriculum within geoscience.
- Demonstrate a collegiate attitude, value teamwork and be able to work with a diverse group of people.
- Willingness to be involved in School, Faculty and University policy development and administrative matters, and show willingness to represent the discipline at School, Faculty and University level, and provide leadership in relevant community forums particularly related to geoscience.

## Applications

**Thank you for your interest in this position.**

**If you wish to proceed, the following information will assist you with your application. Refer also to the selection criteria in the UWA Position Description document.**

**Your application must include the following:**

- A curriculum vitae;
- A statement that clearly addresses the selection criteria;
- A list of publications;
- The names and email addresses of three referees who can be contacted for a confidential report. Please note that your permission will be sought prior to referees being contacted.

The University of Western Australia provides visa sponsorship for international appointees.

**UWA is a National Employer of Choice for Women and a member of Athena SWAN.**

## Lodging your application and closing date

Applications must be submitted online at:  
[jobs.uwa.edu.au](http://jobs.uwa.edu.au)

Closing date for applications is Friday 7 July 2017.

## Enquiries and further information

If you wish to discuss the position in confidence, please contact:

A/Prof. Annette George, Head of School  
School of Earth Sciences  
Faculty of Science, UWA  
Telephone: +61 (0) 8 6488 1923  
Email: [annette.george@uwa.edu.au](mailto:annette.george@uwa.edu.au)



THE UNIVERSITY OF  
**WESTERN  
AUSTRALIA**